

Gesundes Bewegen

Den Arbeitsalltag günstig gestalten

Christian Haid
Medizinische Universität
Innsbruck, Orthopädie,
Biomechanisches Labor
christian.haid@i-med.ac.at

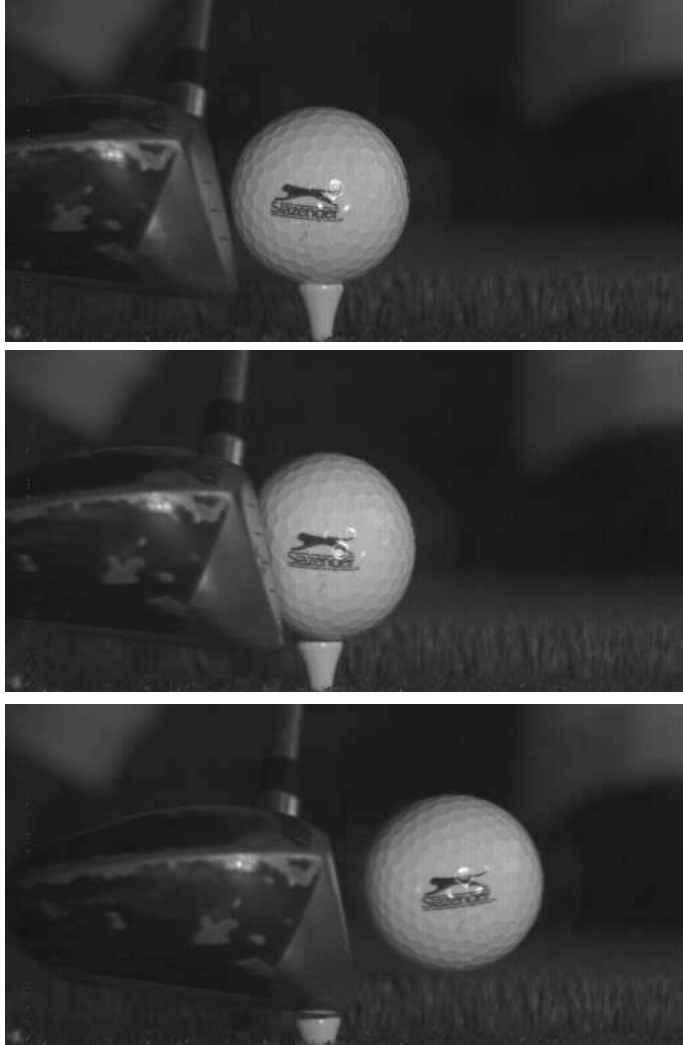


Den Arbeitsalltag günstig gestalten:

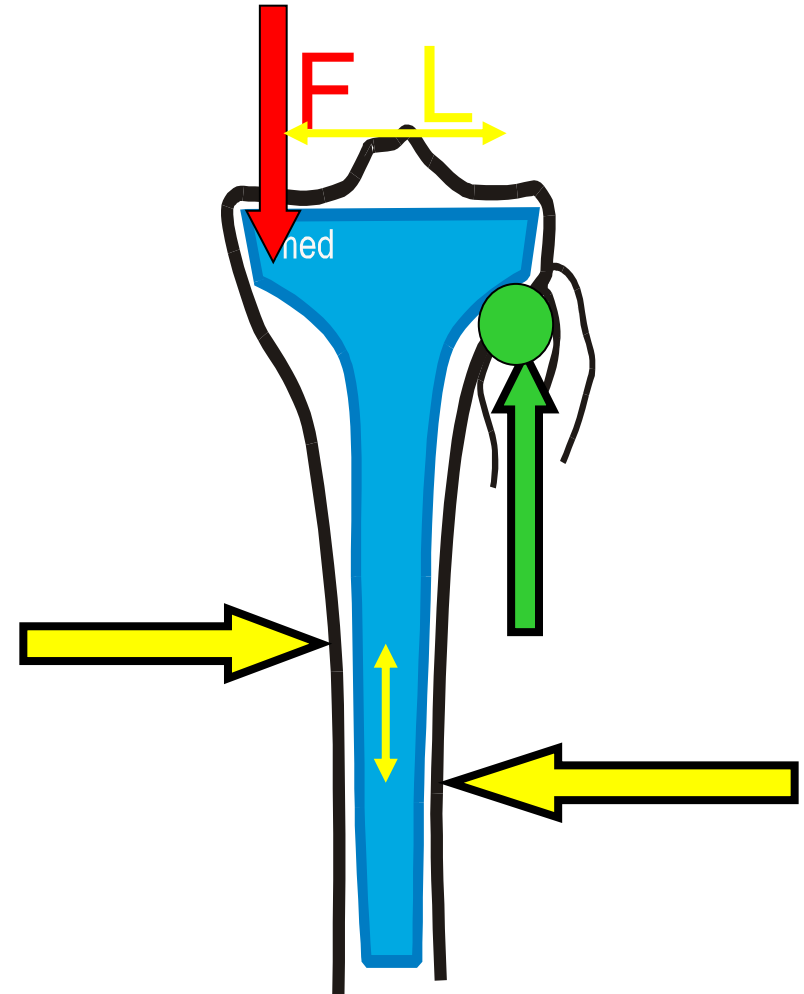
- 1 ----- Sitzende Berufe
- 2 ----- Berufe mit hoher körperlicher Belastung

Es sollen allgemeingültige Aussagen getroffen werden

Dynamische Betrachtungen

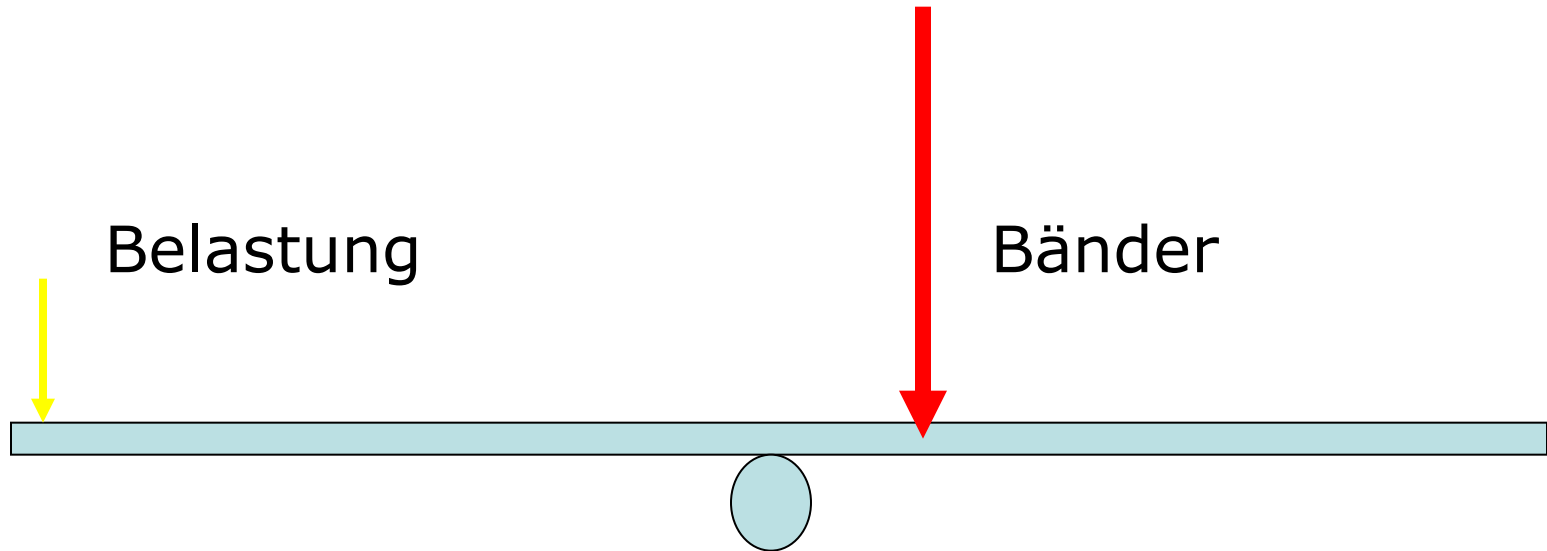
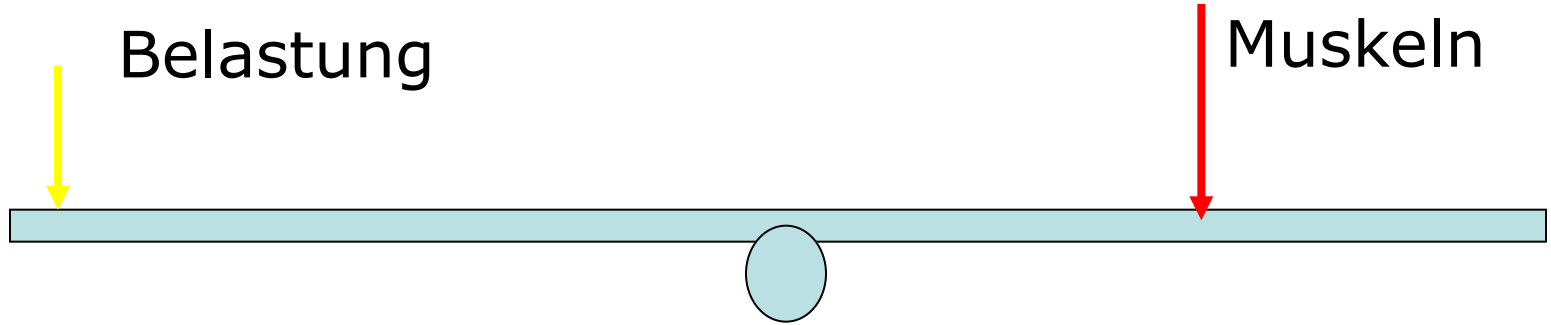


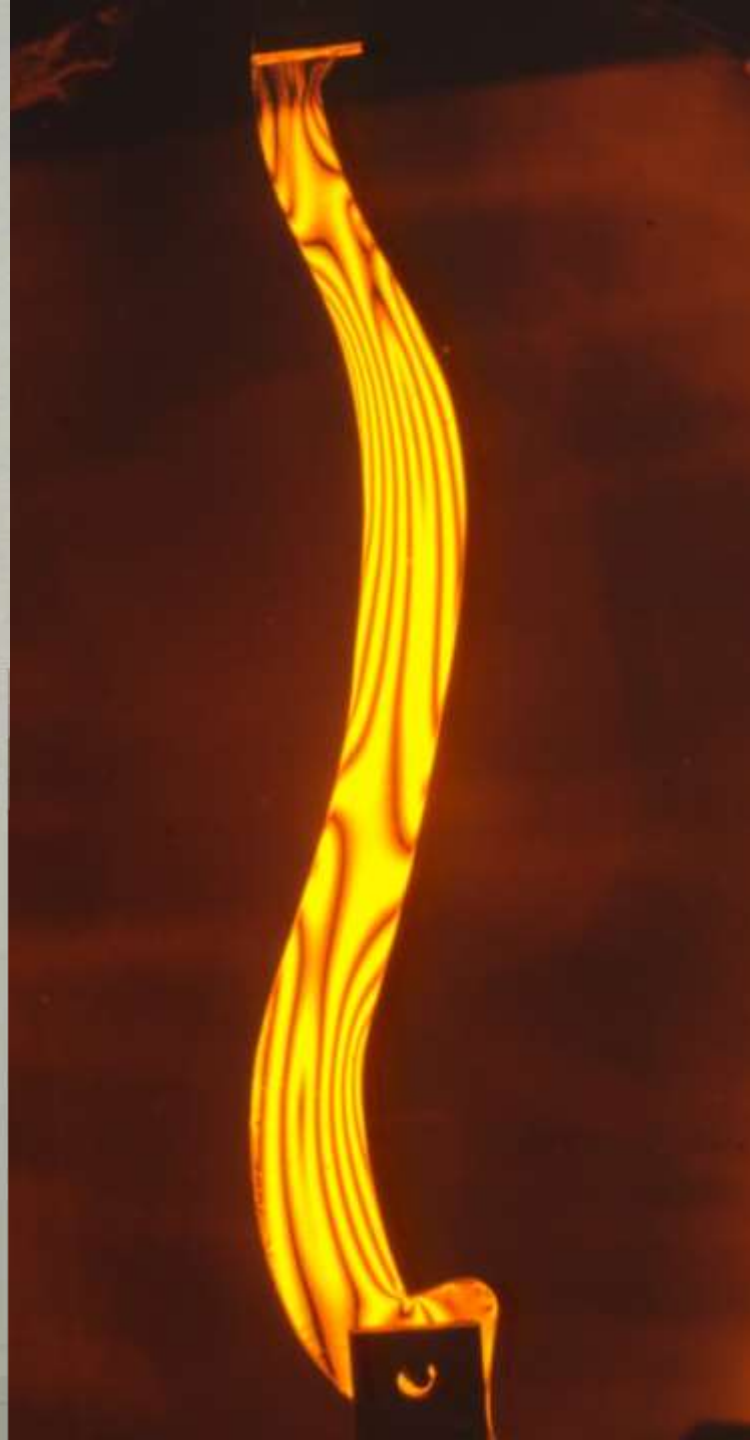
Statische Analysen





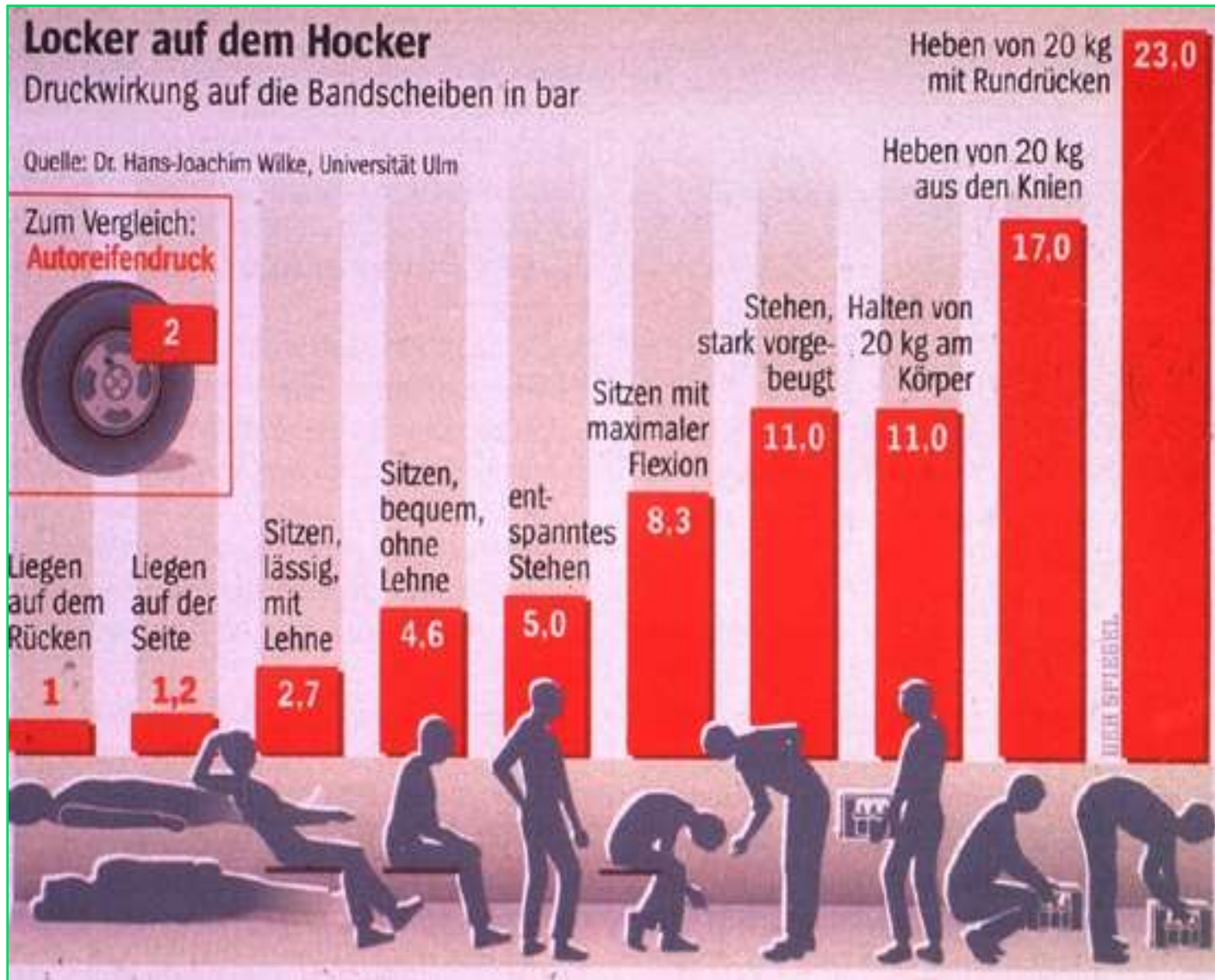
Grundlegende allgemeingültige mechanische Prinzipien: STATIK

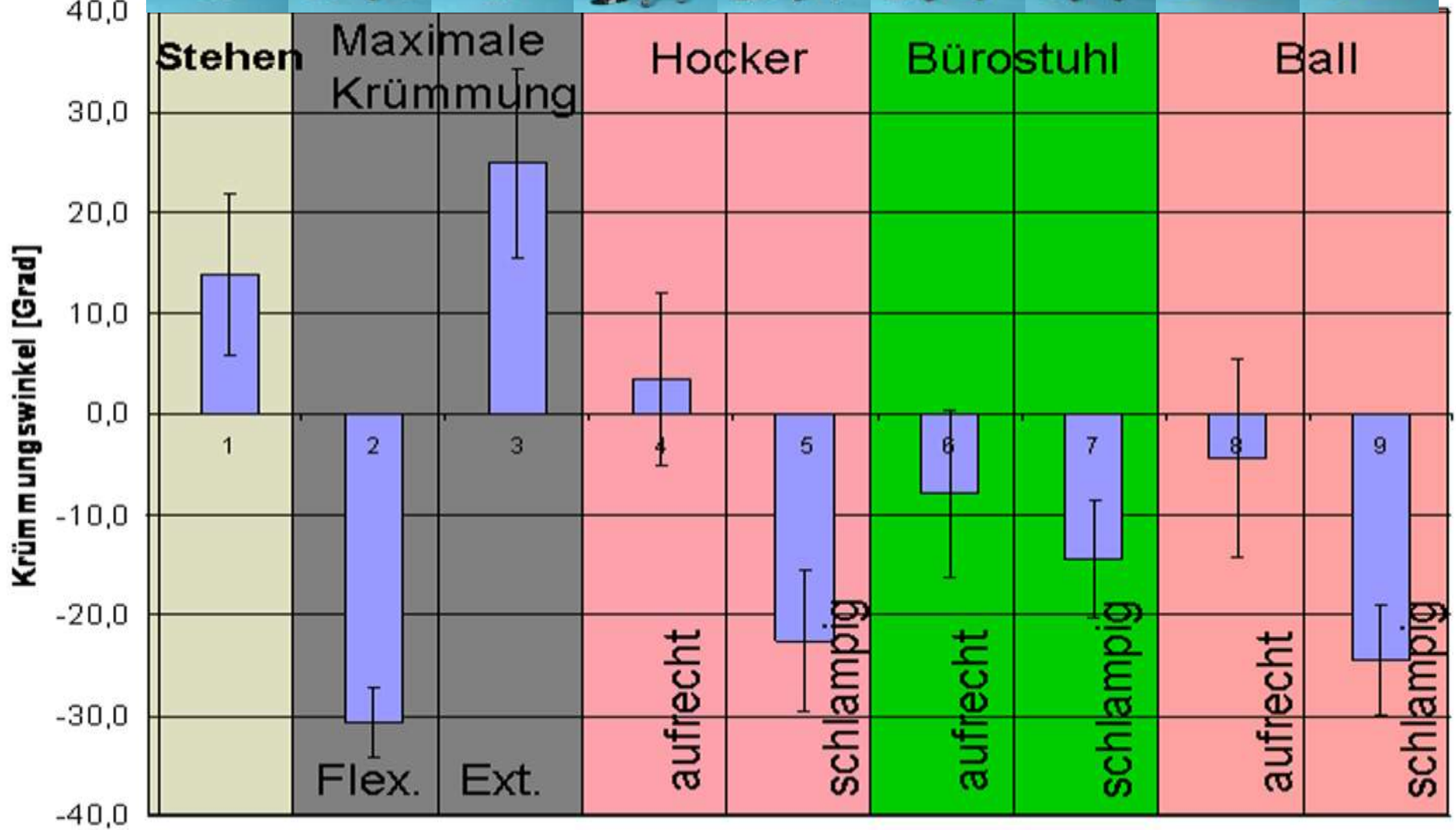






Eigene intradiskale Druckmessungen - Ergebnisse





Die Bandscheibe

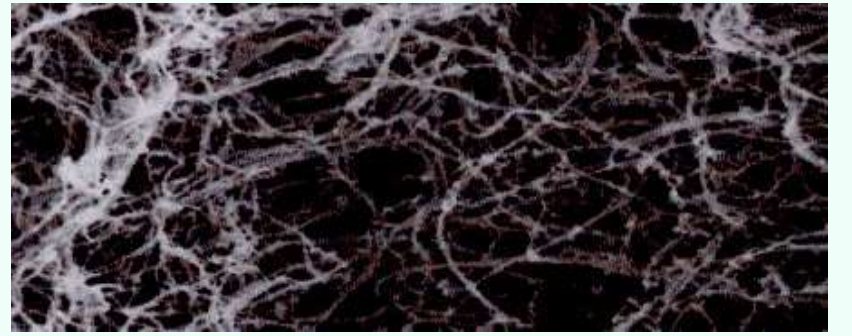


Die Bandscheibe besteht aus:
Nucleus pulposus
Anulus fibrosus (25 layer)

Nucleus Pulposus wandert
zwischen die Schichten



protrusion, prolapse



Elastin



Literatur:

M. Krismer

H.J. Wilke

M. Adams

The Volvo Award on Low Back Pain Research

This is to certify that
Christian Haid

has been honoured
the 1996 Award
for a submitted
paper entitled

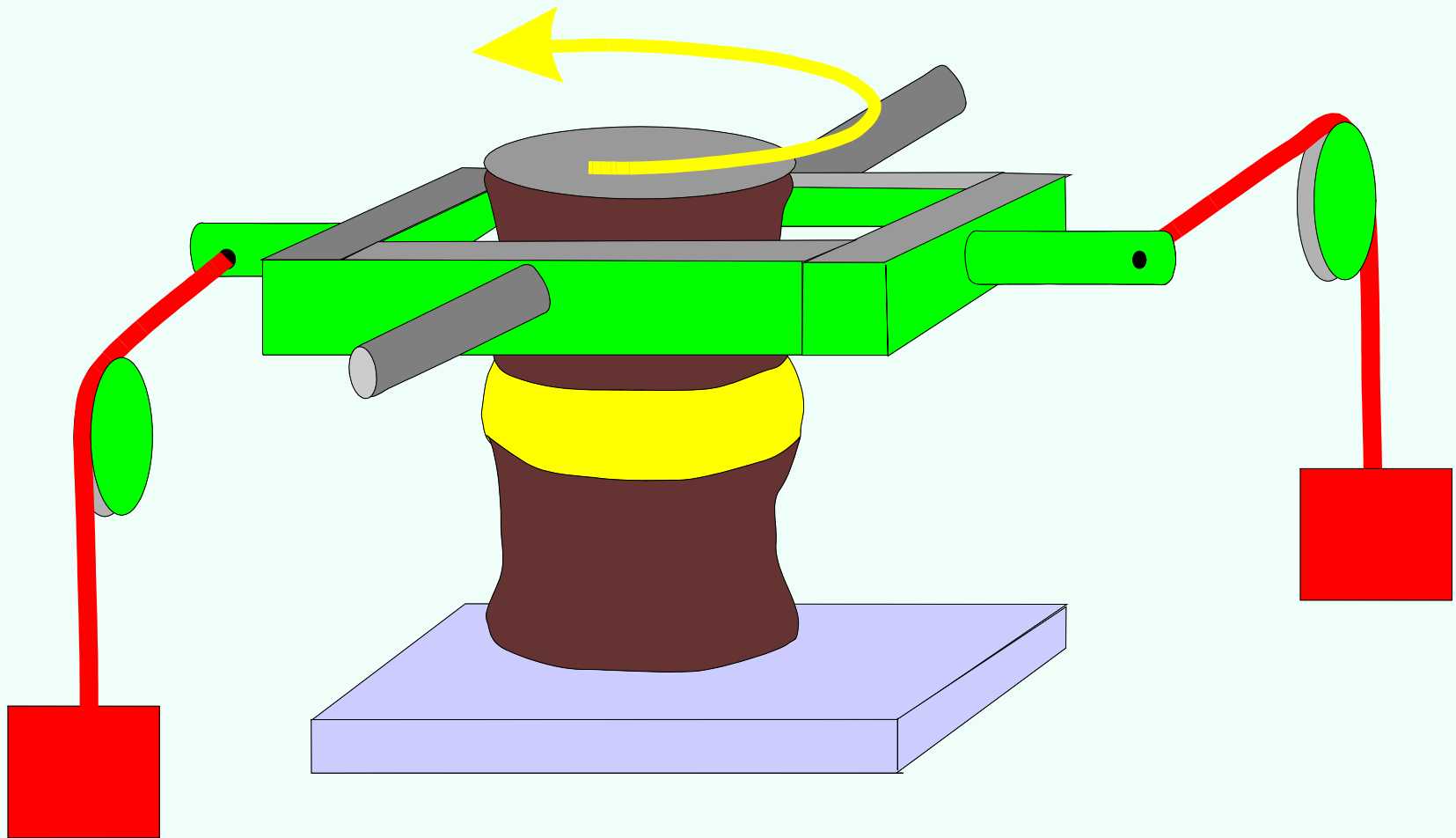
The Contribution of Anulus Fibers
to Torque Resistance

Sören Gyll
President and Chief Executive Officer
AB Volvo, Sweden

Alf Nachemson, M. D., Ph. D.
Chairman of the Volvo Award Committee

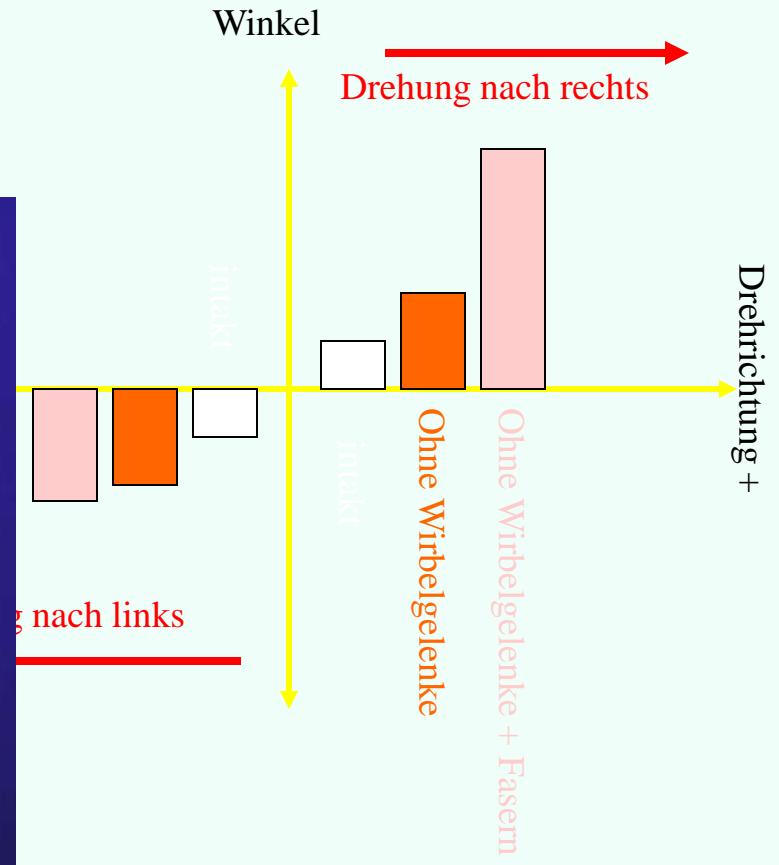
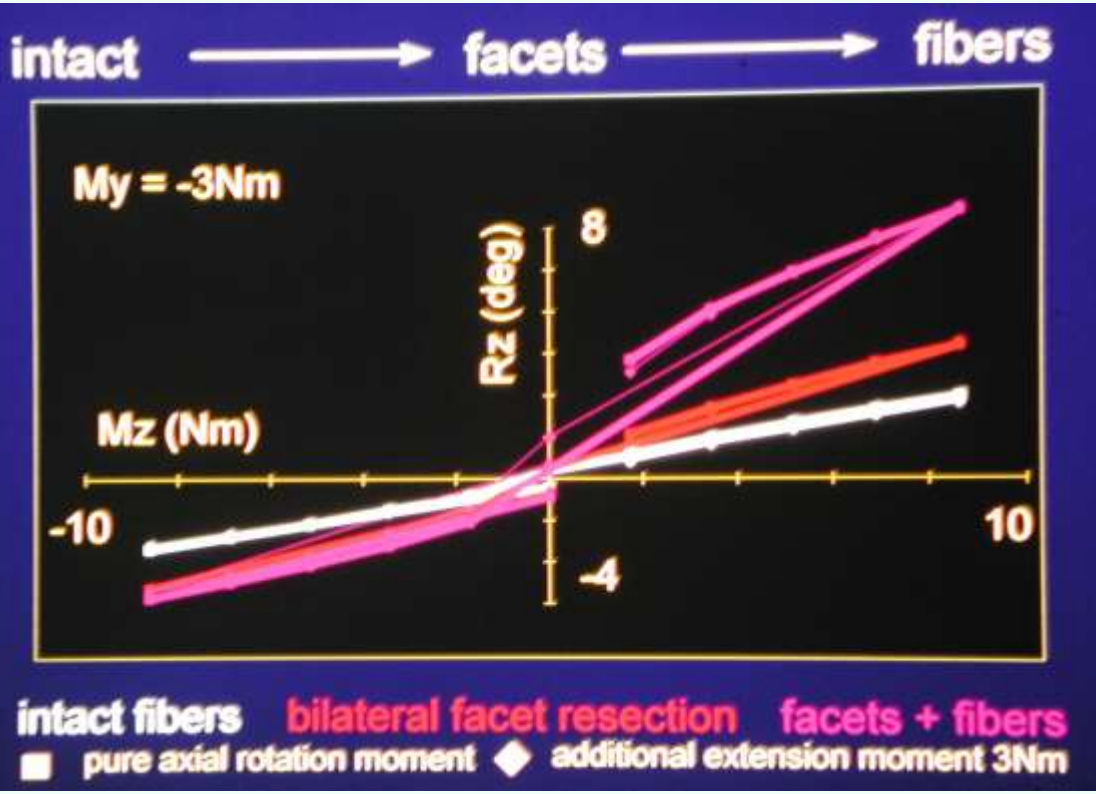
VOLVO

Rotation zwischen Wirbelkörpern

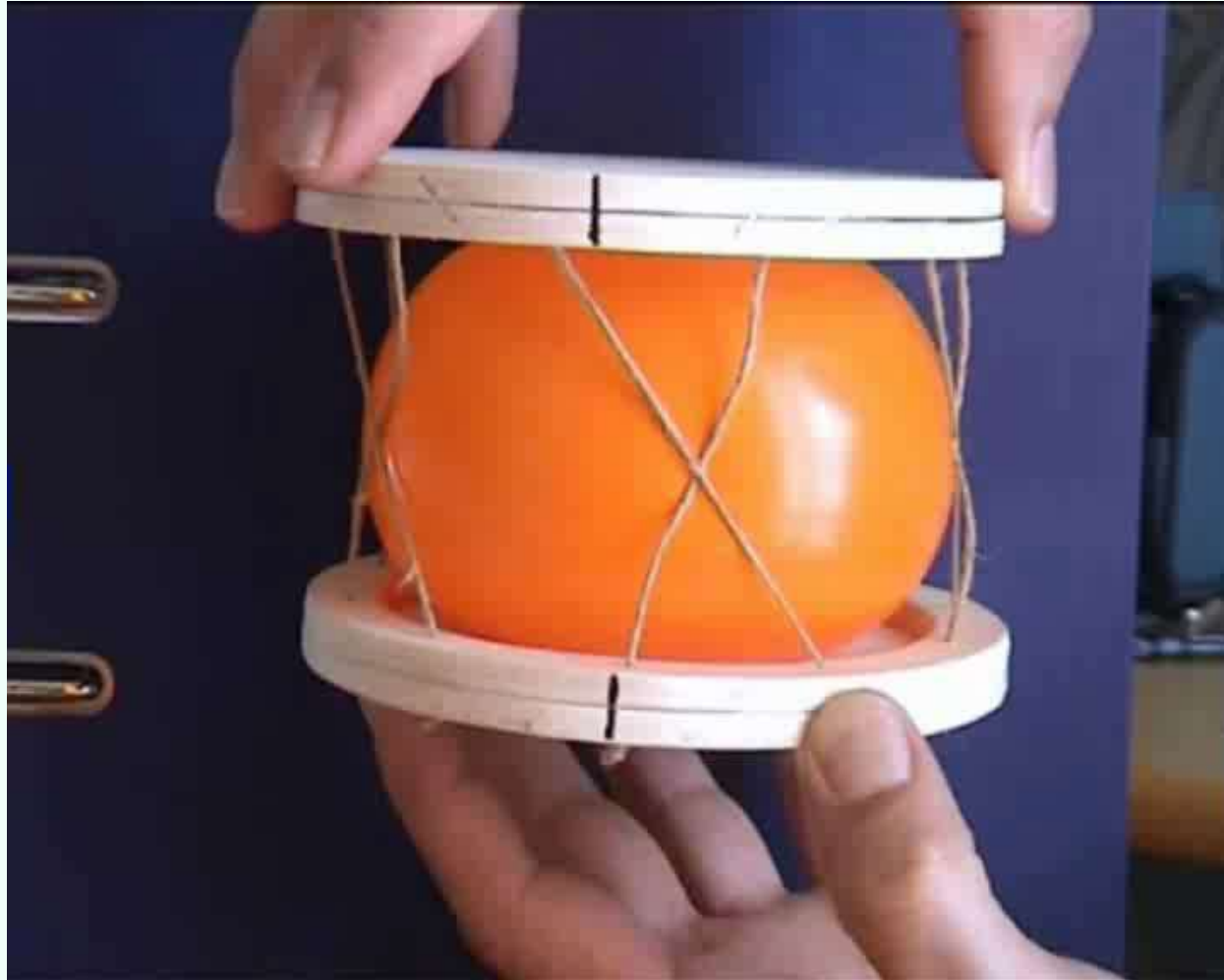


The Contribution of Anulus Fibers to Torque Resistance

Spine 1996, Krismer, Haid et al.



Modell einer Bandscheibe









VIELEN DANK

christian.haid@i-med.ac.at

